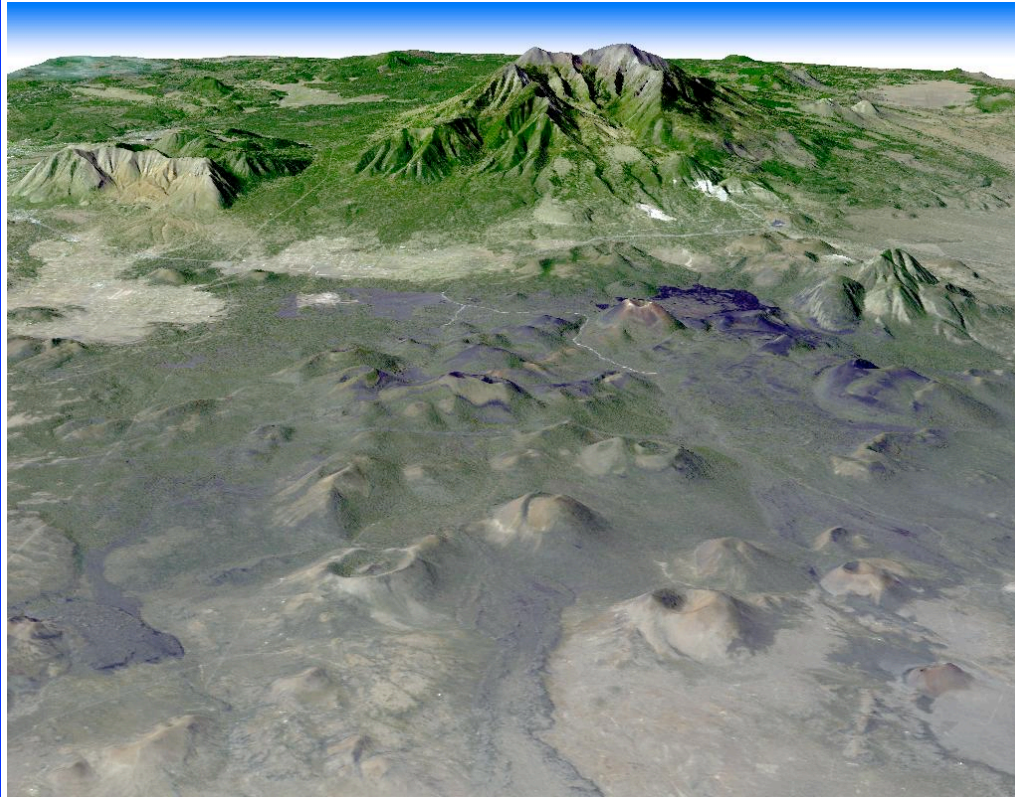


OCTOBER 18-20, 2012

# VOLCANISM IN THE AMERICAN SOUTHWEST

Join us in Flagstaff for a 2-day discussion (and optional fieldtrip) to explore past, present and future of volcanism in the American Southwest.



ASTER image of San Francisco Peaks from NASA Earth Observatory

## Here's all the information you need:

### Organizers:

Jake Lowenstern, USGS; Micheal Ort Northern Arizona Univ.; Greg Valentine, University at Buffalo; Laz Kestay (USGS); Nelia Dunbar (New Mexico Tech)

**Background:** Though volcanic eruptions are comparatively rare in the American Southwest, the states of Arizona, Colorado, New Mexico, Nevada, and Utah host Holocene volcanic eruption deposits and are vulnerable to future volcanic activity. Compared with other parts of the western U.S., comparatively little research has been focused on this area, and eruption probabilities are poorly constrained. Monitoring infrastructure consists of a variety of local seismic networks, and "backbone" geodetic networks with little integration. Emergency response planning for volcanic

unrest has received little attention by either federal or state agencies.

This meeting provides an opportunity for volcanologists, land managers, and emergency responders to meet, converse, and begin to plan protocols for any future activity. Geologists can contribute data on recent findings of eruptive ages, eruption probabilities, and hazards extents (plume heights, ash dispersal). Geophysicists can discuss evidence for magma intrusions from seismic, geodetic, and other geophysical techniques. Network operators can publicize their recent work and the relevance of their

equipment to volcanic regions. Land managers and emergency responders can share their experiences with emergency planning for earthquakes and volcanic eruptions. Part of the meeting will be dedicated to initial planning for eruption response protocols. The agenda will consist both of invited talks, contributed talks and dedicated poster sessions.

**Dates:** The meeting will be held on October 18 and 19, 2012 (Thursday and Friday). An optional field trip is scheduled for Saturday October 20.

**Venue:** The meeting will be held in the main auditorium at the USGS office on 2255 North Gemini Drive, in Flagstaff, AZ 86001  
Directions to the USGS Office is found at: <http://arizona.usgs.gov/Flagstaff/About/VisitorInfo/>

**Travel:** Flagstaff has an Amtrak station, with trains arriving from CA early in the morning, and from the east late in the evening. For flights, Flagstaff airport is only served by USAir, and those flights come through Phoenix. If schedule or cost make flying into Flagstaff unworkable, renting a car in Phoenix and driving up is possible (about 2.5 hours drive). An airport shuttle is available, and the schedule and costs can be found at <http://www.arizonashuttle.com/reservations/flagstaff-reservations>.

**Scientific Program:** The meeting will consist of a mixture of summary talks, posters and panel discussions. Talks are intended to reach across disciplines. If your potential talk would cause geologist's eyes to glaze or emergency managers to fall asleep standing upright, you probably should do a poster.

**Registration:** Registration consists solely of sending an e-mail to [jlwnstrn@usgs.gov](mailto:jlwnstrn@usgs.gov) at the same time

that you send your abstract to the same address. Abstracts and registration are due on August 1, 2012. Registration consists of providing the following information:

- 1) Name:
- 2) Work address:
- 3) Do you also intend to attend the field trip to the San Francisco Peaks Volcanic Field?
- 4) If yes on 3, could you drive (and how many could you fit?)
- 5) Would you be willing to pay for catered lunches and/or snacks (estimated at ~\$20 per day per person)?

**Money:** There is no registration fee. If you can get yourself to Flagstaff and find yourself lodging, you have "paid the fee." The USGS will provide the venue and will rent boards for mounting posters. The USGS cannot legally pay for food for non-government employees, so we will arrange for a caterer and individuals will purchase their meals and snacks (see 5, above).

The field trip is optional and will be organized as individuals (see 3 and 4 above). We will attempt to carpool where possible and to arrange passengers to comply with legal/insurance requirements. Federal employees should be able to share rental vehicles. If we know

who wants to attend ahead of time, we'll make it work!

**Abstracts:** The only rule is that it has to be a single-page PDF formatted for 8.5x11" paper and a file size <1 megabyte. It may contain text, figures, tables, or whatever else you can think of. We will compile all the abstracts and distribute in electronic format. We intend to "publish" the abstract volume as a USGS Open-File Report that will be available online in perpetuity (however long that is).

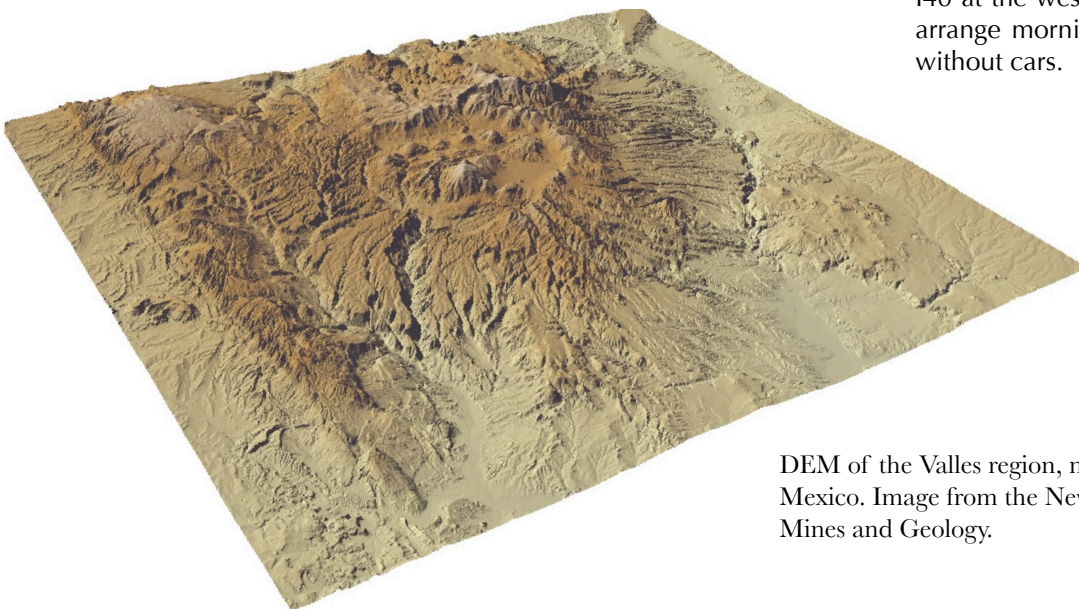
The organizing committee will decide the schedule of talks, panels and posters in late summer. If you have a strong preference, please send it along when you submit your abstract.

If you don't want to present a talk or poster, you may still register and attend.

**Lodging:** Hotels are not expensive in Flagstaff and you can further save money by sharing a room. Most hotels are at least 2 miles from the USGS offices, so car-pooling will be needed. We will post a list of participants to enable communications and room sharing.

This link will show you hotels in Flagstaff in Google maps: <http://g.co/maps/gxxuh>

If you stay on South Milton Road or I40 at the west end of town, we can arrange morning pickups for people without cars.



DEM of the Valles region, northern New Mexico. Image from the New Mexico Bureau of Mines and Geology.